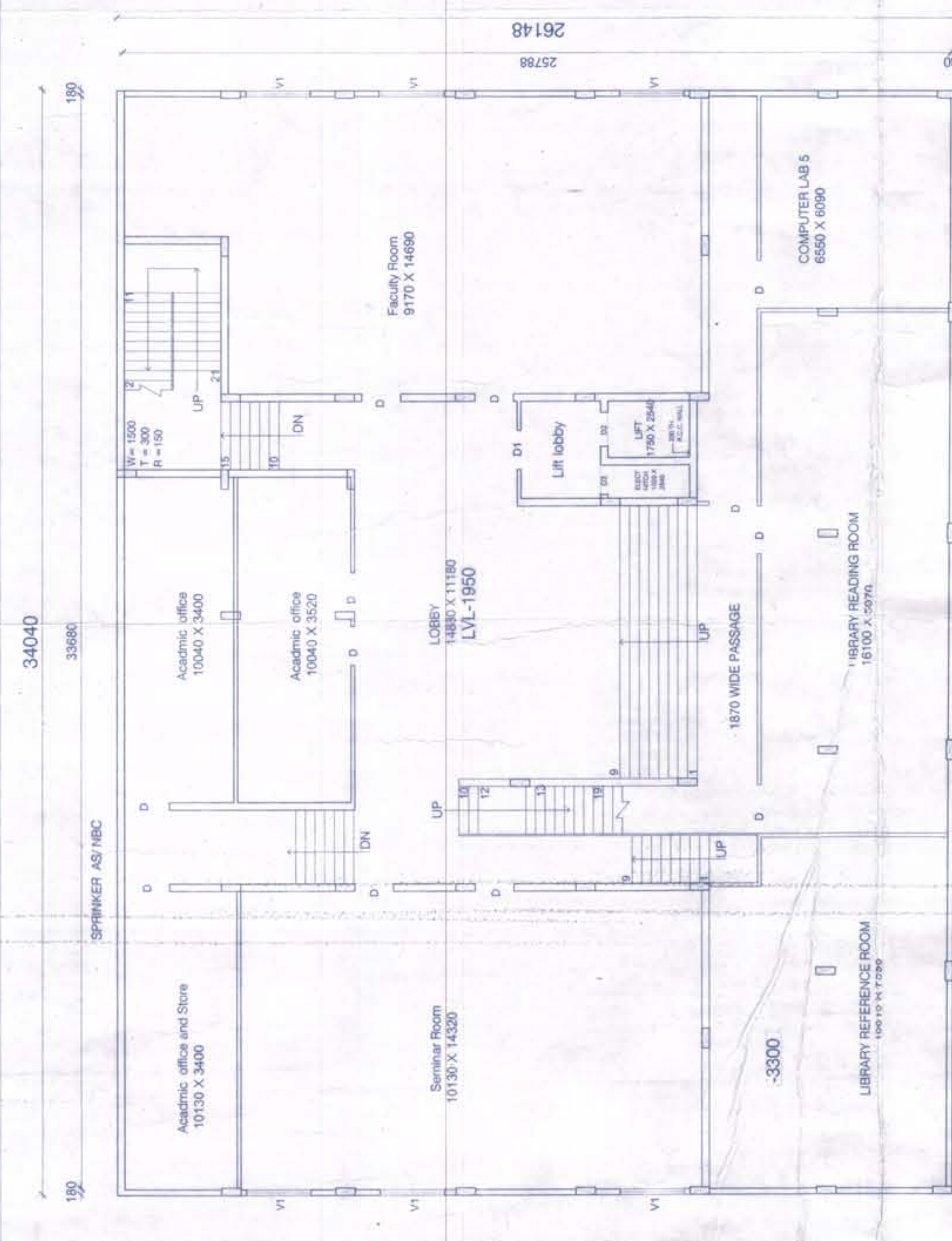
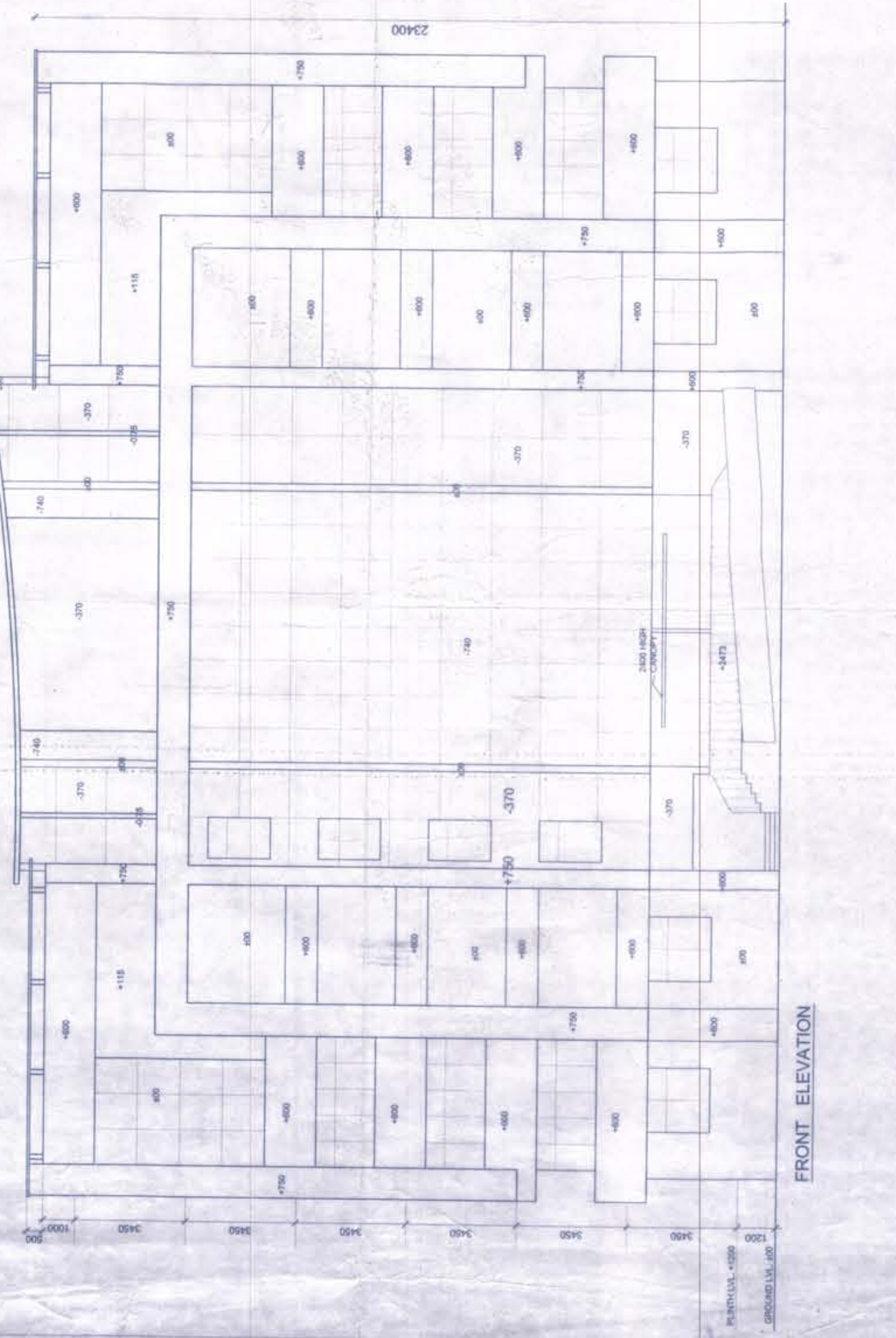


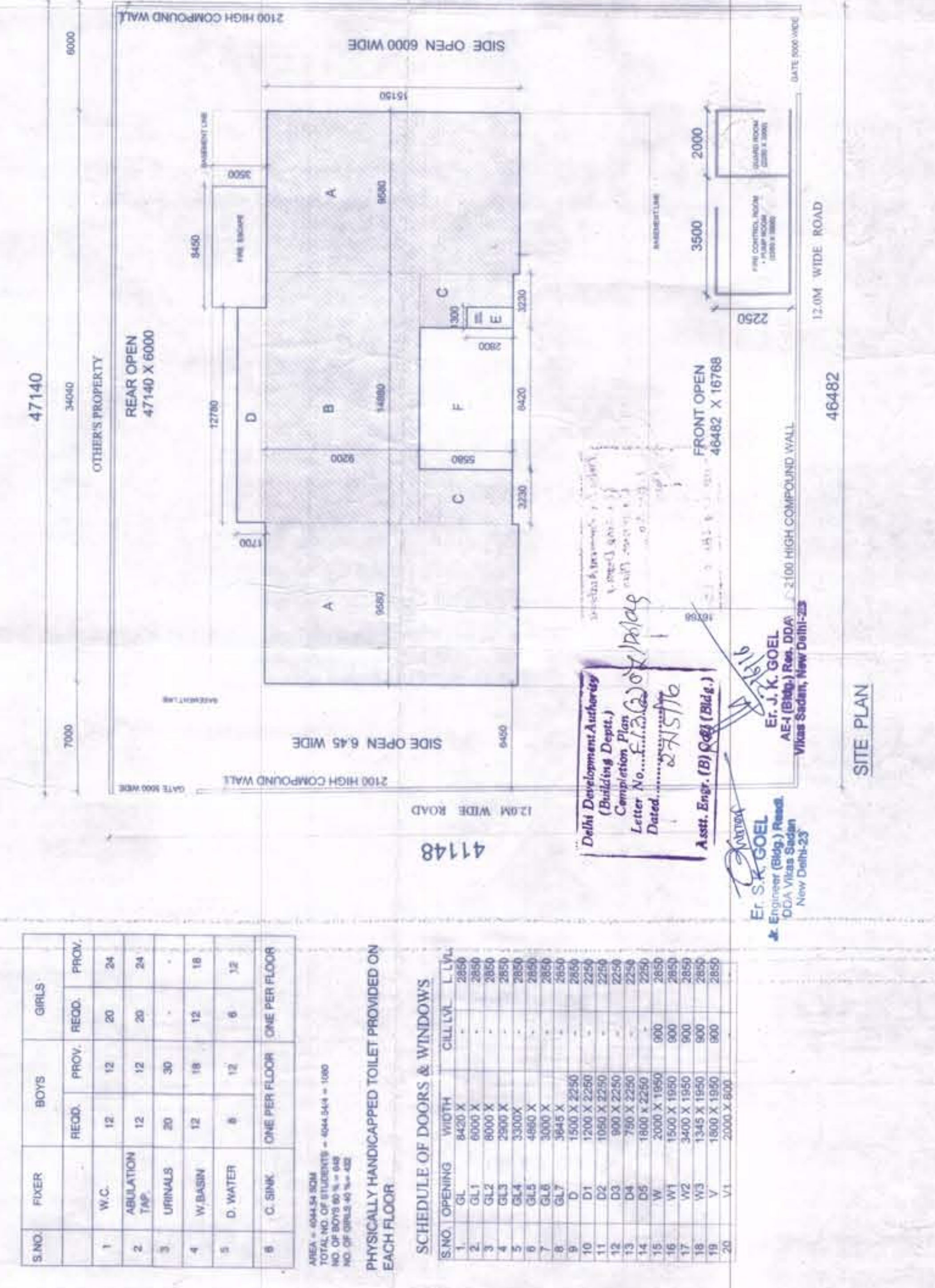
GROUND FLOOR PLAN



BASEMENT FLOOR PLAN



FRONT ELEVATION



SITE PLAN

AREA = 4610.3855 SQ.M.
TOTAL NO. OF STUDENTS = 4044.54
NO. OF BOYS = 2022.27
NO. OF GIRLS = 2022.27

S.NO.	FLOOR	W.C.	ABLATION	URINALS	W. BASIN	D. WATER	C. SINK	ONE PER FLOOR	ONE PER FLOOR
1	1	12	12	30	12	12	12	12	24
2	2	12	12	30	12	12	12	12	24
3	3	12	12	30	12	12	12	12	24
4	4	12	12	30	12	12	12	12	24
5	5	12	12	30	12	12	12	12	24
6	6	12	12	30	12	12	12	12	24
7	7	12	12	30	12	12	12	12	24
8	8	12	12	30	12	12	12	12	24
9	9	12	12	30	12	12	12	12	24
10	10	12	12	30	12	12	12	12	24
11	11	12	12	30	12	12	12	12	24
12	12	12	12	30	12	12	12	12	24
13	13	12	12	30	12	12	12	12	24
14	14	12	12	30	12	12	12	12	24
15	15	12	12	30	12	12	12	12	24
16	16	12	12	30	12	12	12	12	24
17	17	12	12	30	12	12	12	12	24
18	18	12	12	30	12	12	12	12	24
19	19	12	12	30	12	12	12	12	24
20	20	12	12	30	12	12	12	12	24

SCHEDULE OF DOORS & WINDOWS
PHYSICALLY HANDICAPPED TOILET PROVIDED ON EACH FLOOR



AREA DETAIL
TOTAL PLOT AREA = 47.140 x 46.482 x 41.148 = 1926.17 SQ.M.
PERM. GR. COVERAGE @ 35% = 674.16 SQ.M.
PERM. F.A.R @ 225% = 433.8625 SQ.M.
ACHIEVED HEIGHT = 25.60 M
DEVELOPMENTAL AREA = 20.274 SQ.M.
B = 14.880 X 3.200 = 47.616 SQ.M.
C = 2 X 3.200 X 5.560 = 35.584 SQ.M.
D = 12.760 X 1.700 = 21.692 SQ.M.
F = 5.560 X 1.700 = 9.452 SQ.M.
TOTAL = 131.128 SQ.M.
OPEN AREA = 175.000 SQ.M.
E = 1.020 X 2.540 = 2.590 SQ.M.
COVD. AR. - OPEN AR. = 531.925 - 2.590 = 529.335 SQ.M.
Exitng COVD. AR. ON BASEMENT FLR = 890.780 SQ.M.
34.00 X 26.168 = 889.780 SQ.M.
EXIST. COVD. AR. ON GROUND FLR. = 529.335 SQ.M.
EXIST. COVD. AREA ON FIRST FLR. = 524.885 SQ.M.
EXIST. COVD. AREA ON SECOND FLR. = 524.885 SQ.M.
EXIST. COVD. AREA ON THIRD FLR. = 524.885 SQ.M.
EXIST. COVD. AREA ON FOURTH FLR. = 524.885 SQ.M.
EXIST. COVD. AREA ON FIFTH FLR. = 494.54 SQ.M.
ACHIEVED FAR = 4044.54 X 100 = 2022.27
TOTAL PROJECTION = 302.4005 SQ.M.
EXEMPTED AREA FROM FAR = 189.07 SQ.M.
FIRE STAIRCASE = 27.01 X 7 = 189.07 SQ.M.
MUNITY ROOM = 23.8 SQ.M.
WASHING ROOM = 40.2 SQ.M.
CANOPY = 12.375 SQ.M.
GUARD + FIRE ROOM = 12.375 SQ.M.
TOTAL PROJECTION = 302.4005 SQ.M.
TOTAL = 593.8455 SQ.M.
Total Builtup Area = 4610.3855 Sq.m.

COMPLETION PLAN OF HIGHER AND TECHNICAL EDUCATIONAL INSTITUTE AT PLOT NO. 27 & 28 PANKHA ROAD JANAKPURI NEW DELHI-58.
FOR : SHREE MAA EDUCATION SOCIETY (REGD.)

TITLE :-
GROUND FLOOR, BASEMENT FLOOR,
SITE PLAN & FRONT ELEVATION

SCALE = 1:100
DATE : 25 MAY 2016
NORTH

AR. VIJAY GARG
DESIGN CONSULTANTS
ARCHITECT
CA-13667

AUTHORISED SIGNATURE ARCHITECT SIGN.
AR. VIJAY GARG
DESIGN CONSULTANTS
ARCHITECT ENGINEER & CONSULTANT
D-21, PANKHA ROAD INSTITUTIONAL AREA
JANAK PURI DELHI - 58
PH- 28520508.